



ScanVue UnitConfig Utility Driver Installation Instructions (For Windows 7)

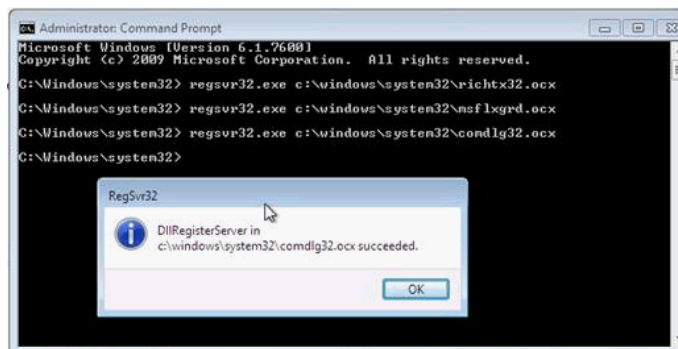
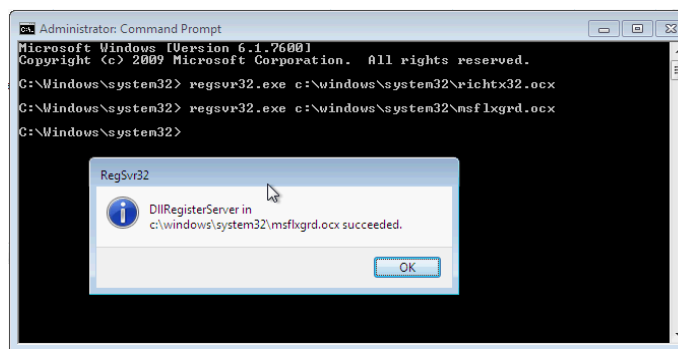
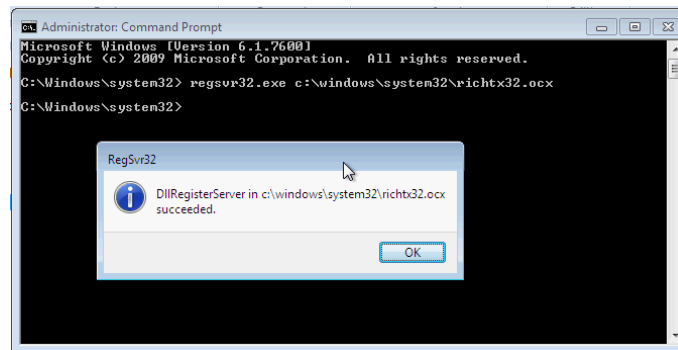
Windows 7 UnitConfig Driver Installation.doc (Rev.C)

Driver Installation:

Purpose: Instructions to register drivers **richtx32.ocx**, **msflxgrd.ocx** and **comdlg32.ocx** in Windows 7 OS (32 Bit) or (64 Bit) environment for ScanVue configuration utility (**UnitConfig**) operation.

Window 7 (32 Bit) OS:

- If not already installed, place **richtx32.ocx**, **msflxgrd.ocx** and **comdlg32.ocx** drivers located in directory **Drivers (Bit 32)** OS into PC direcorey **c:\windows\system32** folder.
- Click on **Start** button → **Accessories**
- Right Click on **Command Prompt** and run as **Administrator**
- Under **Command Prompt**, type the following and press Enter for each:
 - regsvr32.exe c:\windows\system32\richtx32.ocx
 - regsvr32.exe c:\windows\system32\msflxgrd.ocx
 - regsvr32.exe c:\windows\system32\comdlg32.ocx
- Refer to the following messages for each driver registered:



Window 7 (64 Bit) OS:

- If not already installed, place **richtx32.ocx**, **msflxgrd.ocx** and **comdlg32.ocx** drivers located in directory **Drivers (Bit 64) OS** into PC directory **c:\windows\syswow64**.
- Use an elevated command prompt to register these 3 files with the commands as indicated below. You should see registration for all three drivers as having succeeded as referenced below.

